



Boswell Regional Center Bulletin



A Publication for Employees, Family and Friends of BRC

Christmas Around BRC

Inside this issue:

- Front Cover: BRC Parades
- Message From Ms. Mikula 2
- Spotlight: Clint Ashley 3
- Meet the Supervisor 4
- Westminster Gifts 4
- Friends and Family Party 5
- Dream Haven Christmas 6
- PriorityOne Christmas 7
- Food Drive 8
- A Visit From Santa 8
- Allen and Ashley 9-10
- Allen's Letter 11
- Annual Awards at Corinth 12-13
- Pinelake Christmas 14
- Unbreakable Links 14
- BRC Orientation Classes 15
- Pastor's Corner 16
- Mission Statement 16
- MAC EOM 17
- Smith /Waldrop Retires 18
- Announcements 19-23



Boswell always looks forward to creating a new Christmas float each year to display in the local parades. The weather was perfect for the parades this year as all enjoyed seeing the beautiful lights and decorations. The BRC float won second place in the Magee parade and third place in the Mendenhall parade. BRC also participated in the Brookhaven parade. A special thanks goes out to all who worked so hard to make this year's float amazing yet again. There is a lot of work that occurs behind the scenes; from pulling the float, decorating, building the scenes, and directing the line up! Boswell appreciates everyone's support.

The publication of the BRC Bulletin is made possible by contributions from our dedicated and talented employees. The articles and pictures were written, taken and formatted by BRC employees. Their contributions are greatly appreciated! We sincerely hope that you enjoy this edition of the Boswell Regional Center Bulletin, December 2016 Issue.



Message From Executive Director of the Mississippi Department of Mental Health

Ms. Diana Mikula



The 2017 Regular Session of the Mississippi Legislature will begin on Tuesday, January 3, 2017. Our legislative work picks up immediately after we return from the holidays at the end of year, and both the holidays and the session will be here before we know it.

There are several dates related to the session that state employees may want to keep in mind as we move forward. The first of those is Monday, January 16. That will be the deadline for the introduction of general bills and constitutional amendments. On or shortly after that day, we will know the majority of the bills that will be introduced during the session and what bills will affect DMH and state employees.

The next major deadline will be Tuesday, January 31, which is when the House of Representatives and the Senate must pass bills out of their respective committees. After this deadline, we will have a much more clear idea of what bills may become law. Once approved by the committees in each chamber, the bills must be approved by the full membership of their chamber. That deadline for passage of bills by the full membership is February 13.

I want to make sure our employees have a good understanding of the legislative process, but I also do not want to overwhelm anyone with details. Generally speaking, once a bill has

been passed out of its original chamber's committee and approved by its full membership, it will be sent to the other chamber and go through the same process of committee approval and then full membership approval.

The deadlines I have referenced above apply to general bills and constitutional amendments, but not to revenue and appropriations bills. Those bills, including the DMH appropriations bill, have their own deadlines for committees and full approval. The deadline for introducing appropriations bills is February 22.

Our legislative priorities for the upcoming session will be very similar to last year. We will once again be asking legislators to consider realigning the salaries for our direct care series of employees. The information that we shared with you and with them last year has not changed. Our direct care employees have incredibly difficult jobs, and we want to make sure they receive compensation that is in line with the challenges they face.

We will also be asking legislators for funding to continue to expand the ID/DD Home and Community Based Waiver. This program has been instrumental in helping people with intellectual and developmental disabilities live successfully in the community.

We will be sharing more about the legislative session next month. In the meantime, do not hesitate to ask us or the staff at your programs if you have any questions.

Thank you to everyone for your continued dedication to serving our fellow Mississippians. I hope you and your families enjoy the coming holidays, and I look forward to a new year and all of the work I know we can accomplish in it.

Sincerely,
Diana Mikula
Executive Director

Mississippi Department of Mental Health

Spotlight on Clint Ashley



Clint Ashley, Director of BRC

Boswell Regional Center welcomes Clint Ashley as the new Director

Clint Ashley began his tenure at South Mississippi State Hospital on February 1, 2000. Through the years, he has served as Risk Management Director, Director of the SMSH Crisis Intervention Center in Laurel and as Clinical Support Director. On August 1, 2011, Clint was appointed as the second Director of SMSH and has served in that capacity since then.

Clint holds a Master of Science Degree in Workforce Training and Development from The University of Southern Mississippi and is a 2003 graduate of the John C. Stennis Institute of Government. He completed the Mississippi State Certified Public Managers Program in 2002, and was awarded the National Askew Award for best model project. Clint is also a 2009 graduate of the DMH "Focus" Accelerated Leadership Development Program. Clint's undergraduate degrees include a Bachelor of Arts Degree

in Public Administration from The University of Mississippi, an Associate of Arts Degree from Copiah-Lincoln Community College, and an Associate of Science Degree in Information Systems Technology from Jones County Junior College. He is a member of Seminary Baptist Church, Friends of SMSH, and the Area Development Partnership.

Clint is a native of Copiah County. He and his wife, Alice, reside in Covington County. They have three college-age children, Jarred, Julia and Kelsey. He enjoys spending time with family and friends, church activities, outdoor activities and Ole Miss football.



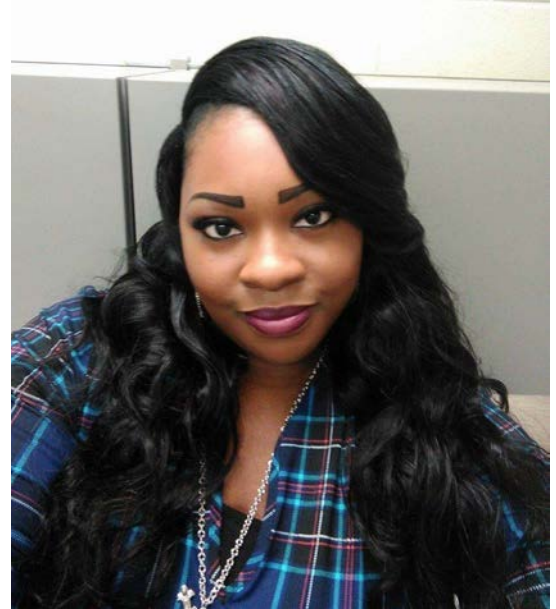
Boswell Regional Center

Where dreams can become reality.

Meet The Supervisor

LaShina Keyes

Years of Service: 10 years in February
Hire Date: February 16, 2007
Resides: Magee, MS
Favorite Color: Purple
Favorite Team: Dallas Cowboys
Favorite Food: Seafood
Favorite Restaurant: Johnny T's Bistro Bar & Grill
Favorite Vacation Spot: Gatlinburg, Tennessee
Favorite Music: Gospel
Favorite Song: Heavenly Choir by The Canton Spirituals
Favorite Movie: Sling Blade



I am truly honored to be an employee of BRC. I have learned so much over the years that I have been here. Working here can be a challenge, but God puts forth his best angels to care for those who can not help themselves. I pray that I continue to grow in this field, and help make BRC a success for the individuals we serve.

Westminster Presbyterian

Bro. Orlando Rankin and Bro. Rudy Jackson receive gifts from Westminster Presbyterian Church for the individuals of Boswell Regional Center.



Friends and Family Christmas Party

Good times were had and new memories made at another exciting BRC Friends and Family Christmas Party. Each year, Boswell's staff and individuals enjoy a fun-filled evening of food, fun, and fellowship. This year the party was held on December 9th at the National Guard Armory in Magee. The party kicked off at 4:00 p.m. as DJ Big "G" played Christmas songs to loosen the crowd. Steven Allen, Director of BRC, made his rounds to everyone in the building as he hugged them and posed for pictures as this was his last Christmas party as the Director of BRC. But, he made it clear that this would not be his last BRC party to attend. Williams Catering and Tyson Foods catered this event, and made sure everyone had plenty to eat. The events committee would like to thank all the staff that volunteered to help, especially the maintenance department, recreation department, Santa and his Elf helper. So, if you missed this year's event, be ready for next year's because it will be loads of fun! This event was sponsored by The Boswell Regional Center's Friends and Family Association. Boswell appreciates the continued support with fundraisers and do-



Dream Haven Christmas Party

Boswell's Dream Haven Christmas Party was held on December 7th from 11:30-2:30. Everyone enjoyed the feast which consisted of smoked chicken, green beans, potato casserole, rolls, sweet and un-sweet tea, and delicious cupcakes. The individuals were very happy and surprised with their Christmas gifts of a monogrammed cooler bag and drawstring backpack. Also, recognized during this time were the following Dream Haven participants: M. Cotton for being so kind, E. McInnis for being so helpful, and T. Cliburn for being so polite and helpful. They are all so deserving of these awards. Merry Christmas to all!



PriorityOne Christmas Party



PriorityOne Bank has been celebrating Christmas with Boswell Regional Center since 2003. A Christmas wish list is requested by the staff at PriorityOne Bank every year, and the gracious staff plan a special evening of fun for the individuals to enjoy. This event is held at the Training Center in downtown Magee. This year's dinner was mouthwatering chicken from Popeyes with all the trimmings! Everyone enjoyed the food and fellowship just before Santa and Mrs. Claus arrived with the big, red sack full of gifts for everyone. Santa is always a big hit because everyone has a chance to sit with him and have a picture taken. After all the gifts are opened and the pictures are taken, everyone sings Christmas carols to end the evening. BRC appreciates the awesome staff at PriorityOne for their continued support and generosity. The smiles and laughter across the room are always a joyous feeling at Christmas.

Food Drive



Pinelake Geriatric Services, along with other departments on campus and in the community, gathered canned goods for the Food For Families that is located in Magee beside the Community Center. The First United Methodist Church, in partnership with the Mississippi Food Network, houses a pantry at this location so that ones in need of food items can stop by on the designated days. Pictured above is: Suzie Thames, volunteer for the Food For Families; Kay Adcox, Boswell Regional Center Pinelake staff and Mike Sellers, Property Officer at Boswell Regional Center. It is such a blessing to be a blessing!



A Visit From Santa!



A surprise visit from Santa was perfect timing for the individuals residing at Morton and Goodwater Group Homes. There was a knock at the door and everyone looked around. A man with a big, red, bouncing belly and a long white beard enters the homes to deliver gifts. It is a blessing to share the gift of giving. Every individual received a gift and a chance to shake hands and visit with Jolly Old Saint Nick.



Allen and Ashley Accept New Roles



.....Continued



Steven Allen
Director
Web: www.brc.state.ms.us



Tel: 601.867.5000
Fax: 601.867.5162
Email: webmaster@boswell.state.ms.us

Dear Boswell Family,

I just wanted to take an opportunity to express my appreciation to each and every one of you for your dedication and friendship over the many years of my career at Boswell Regional Center. As you all know by now, I was recently appointed by the Board of Mental Health to serve as the Deputy Executive Director effective January 1, 2017.

This is a very important position for the state's mental health system and I certainly do not take it lightly. I appreciate Ms. Mikula and the Board for their confidence in me to have the opportunity to serve in this role. I sincerely believe I was chosen in part because of the great work each of you have done to support the people at BRC in all of the different programs. I know you have all repeatedly gone above and beyond to make sure people's dreams become a reality.

Over the years, many of you have given me advice, guidance, and prayers during my time as director and I have been truly blessed to be a part of such a great team of people. On December 15, 2016, the Board of Mental Health appointed Mr. Clint Ashley as the new director. As Boswell transitions, I am asking each of you to show him the same courtesies you have shown me. I know that Mr. Ashley will need and appreciate this.

I think most of you would agree that the only thing that remains constant at BRC is change itself. I hope all of you know that even though things will not be the same, they can be even better. I look forward to a lot of great things to come for all of you. Isaiah 31:6 says, "Be strong and of good courage, do not fear nor be afraid of them; for the LORD your God, He is the One who goes with you. He will not leave you nor forsake you."

Thank you again for everything you do for the people we support and I pray for God's blessings on all of you.

Sincerely,

Steven D. Allen

Mailing: P.O. Box 128, Magee, MS 39111

Shipping: 1049 Simpson Hwy 149, Magee, MS 39111

A MISSISSIPPI DEPARTMENT OF MENTAL HEALTH FACILITY

Annual Awards Celebration at Corinth Baptist Church



Annual Awards Celebration at Corinth Baptist Church

Continued



Guest Speaker District 77 House of Representative Andy Gipson pictured with: Steven Allen, Director of Boswell Regional Center



Pinelake Christmas Party



Spreading Christmas Cheer

Unbreakable Links and 601 Riders donated Christmas gifts to individuals residing at the Brookhaven group homes on Saturday, December 17th. Boswell appreciates all of the community involvement and looks forward to lasting relationships. Pictured with the organizations is: Rosalynn Forrest, Director of Brookhaven Group Homes.



BRC Orientation Classes



December 1st Orientation: Back Row Left to Right: Kenneth Gardner (Recreation), Joseph Williams (Security), Westley Williams (Success), Haley Little (Pinelake), Hanna Sims (Floater), Marissa Stampley (Magnolia), LaRanda Langston (Floater), Amecia Durr (Broadhead) **Front Row Left to Right:** Isis Washington (Brookhaven Autism), Destiny Emmons (Oakbrook), Pamela Elliott (Brookhaven Autism), Hunter Thompson (Fairway), Tara Dickerson (Campus Day-Services), Jasmine Powell (Pinelake), Amanda Berry (Business Services)



December 16th Orientation: Back Row Left to Right: Erin Ward-Hill (Broadhead), Larissa King (Oakbrook), Marquetta Caffie (Success), Morgan Rhodes (Success), Dominick Johnson (Success), Chataura Smith (Oakbrook) **Front Row Left to Right:** Patrick Sandifer (State Farm), Chelsey Sullivan (Nutritional Services), Jasmin Catchings (Pinelake), Evonnie Owens (Security), and Trae Lovitt (Pinelake)

Pastor's Corner



**Bro. Rudy Jackson,
BRC Chaplain**

The Carpenter

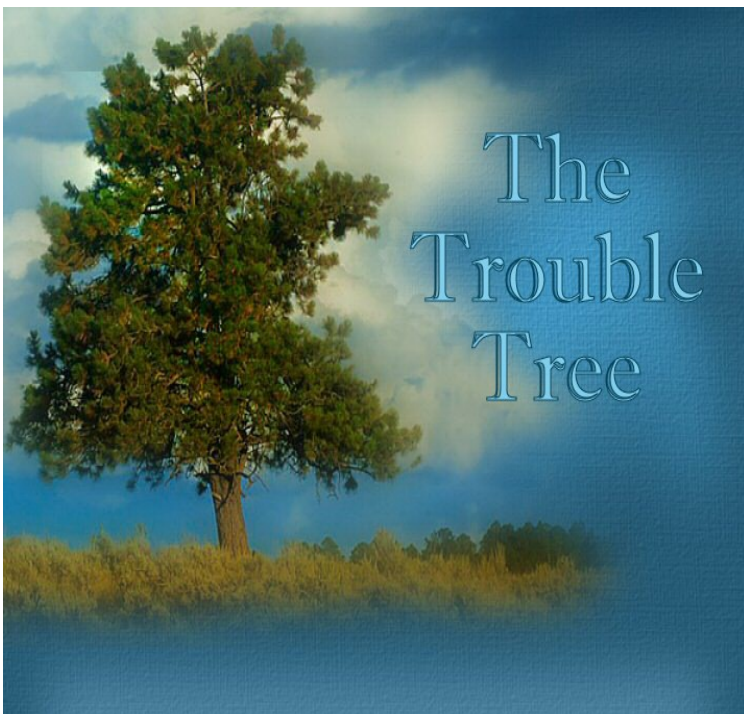
I hired a carpenter to help me restore an old farmhouse. After he had just finished a rough first day on the job, a flat tire made him lose an hour of work, his electric saw quit, and now his ancient pickup truck refused to start.

While I drove him home, he sat in stone silence. Upon arriving, he invited me in to meet his family. As we walked toward the front door, he paused briefly at a small tree, touching the tips of the branches with both hands. When opening the door, he underwent an amazing transformation. His tanned face was wreathed in smiles, and he hugged his two small children and gave his wife a kiss.

Afterward, he walked me to the car. We passed the tree and my curiosity got the better of me. I asked him about what I had seen him do earlier. "Oh, that's my trouble tree," he replied. "I know I can't help having troubles on the job, but one thing's for sure, troubles don't belong in the house with my wife and the children. So I just hang them up on the tree every night when I come home. Then in the morning I pick them up again."

"Funny thing is," he smiled, "when I come out in the morning to pick them up, there aren't nearly as many as I remember hanging up the night before."

1Pe 5:7 Casting all your care upon him; for he careth for you.



Mission Statement

Boswell Regional Center offers Specialized program options to Mississippians with Intellectual and Developmental Disabilities. These programs are designed to identify the necessary supports for successful community transition. With collaboration between the individual, family, and community, dreams can become reality.

Where Dreams Can Become Reality

MIAC EOM



The MS Adolescent Center's November Employee of the Month is Ida Washington. She is 3rd shift Residential Living Staff MHATT Trainee. Congratulations and MAC appreciates you!

Mary L. Smith and Jeffrey Waldrof Retirees from BRC



On December 30, 2016, Boswell Regional Center held a retirement reception honoring retirees, Mary L. Smith and Jeffrey Waldrof. This event was held in Brookhaven at Dream Haven's Day Services Program. While it is hard to see our co-workers retire from Boswell Regional Center, we are happy that they'll be free to participate in all those things they've been planning on doing upon their retirement. Whether it's fishing, traveling, spending time with family or other employment, we congratulate them on reaching this milestone and wish them well. Each retiree is honored with a certificate and a chance to say goodbye to their fellow employees at a retirement reception. Pictured above left: Cindy Womack, Assistant Director at Boswell Regional Center and retiree, Mary L. Smith. Pictured above right: Ms. Womack and retiree, Jeffrey Waldrof. Best wishes to you both!

How to Contact Your Legislator

The 2017 Legislative Session will begin on January 3, 2017. The Department of Mental Health would like to make sure all of its employees are aware of the legislative process and are as involved as they would like to be. Remember that it is your right as a citizen to speak to your legislators and let them know your opinions and your feelings about the directions our state government is going.

We have had employees ask in the past how they can identify and reach out to their legislators. There are a few ways you can do this:

- ⇒ If you happen to know who your legislators are, you can find their contact information at the Mississippi Legislature web site at www.legislature.ms.gov. You'll see a menu near the top of the page that has a button labeled "Legislators." You can hover over that to find your senators and your representatives.
- ⇒ If you do not know who your legislators are, there are some online tools that can help you identify them:
 - ⇒ Visit www.openstates.org. You can enter your address in a text box at the top of the page or browse by state. Entering your address will show you who your legislators are. Clicking their names will also give you their contact information.
 - ⇒ Empower Mississippi is another site that will identify your legislators. You can reach it by using your computer to visit www.empowerms.org/do-you-know-your-legislators/. Once again, you can simply enter your address to identify and get contact information for your legislators.
 - ⇒ The Electric Power Associations of Mississippi have a legislative roster available on their web site and as a smartphone app. Search for "Mississippi Legislative Roster" in your phone's app store or visit ecm.coop/roster on a web browser for their guide.

With the 2017 Legislative Session approaching, it is important to know how to effectively communicate with your legislators if you do decide to contact them.

During session, legislators are very busy and often don't have time for long phone calls or in person conversations. The best way to contact them is through letters or email. If you choose to contact your legislator this session be sure that you are contacting the legislator who represents the district you live or work in. DMH has been discussed often in the off season, which only means it will continue to be discussed during session. When you contact legislators be sure to clearly tell them what you want them to know, but be brief with your message and make sure you are prepared before you send it. Always be honest, accurate and timely with the information you send a legislator.

One thing to remember is that you should not use any state time or resources if you do reach out to your legislators. You will need to contact them on your own time, on your own phone, and through your own personal email address or stationery. While we appreciate our employees' willingness to get involved, it must be done as a private citizen, not as a representative of any state agency.

One final thing to remember is something to remember in all of our professional interactions – always remain polite and courteous. Both state employees and legislators are public servants, and the Legislature has been supportive of our agency's community expansion efforts over the past several years. Please make sure to thank any legislator you speak to for their support, and for taking the time to hear your concerns.

POSITIONS AVAILABLE
(Magee, Brookhaven, New Hebron
and Shivers)

Direct Support Professionals are needed
for all shifts and locations.

If you believe that helping people
matters, then we need you at BRC!

For more information contact:

Human Resources
601-867-5000 Ext. 75079

P. O. Box 128
Magee, MS 39111



Boswell Regional Center

Where dreams can become reality.

Mission Statement

Boswell Regional Center (BRC) offers specialized program options to Mississippians with Intellectual and Developmental Disabilities (IDD). These programs are designed to identify the necessary supports for successful community transition. With collaboration between the person, family, and community, dreams can become reality.

Programs

Boswell Regional Center programs offer an extensive range of program and service options to those with Intellectual and Developmental Disabilities (IDD). The primary goal of each existing program using a person centered approach is to allow each person to live more independently and to fulfill their lives through meaningful days.

Programs and services offered through BRC include:

Community Options:

- In Home Services
- Community Living
- Crisis Transition Homes
- Employment Opportunities
 - Day Options
 - Behavior Services
 - Autism Services



Campus Options:

On Campus Residential Services

On Site Day Programs

Membership Information

Indicate at right which type of membership you wish by circling the appropriate amount.

Name: _____

Address: _____

City: _____

State: _____

Zip Code: _____

Phone: _____

Email: _____

Please make your check payable to:
Friends & Family Association
P.O. Box 128
Magee, MS 39111

Annual Membership Fees

Single/BRC Employee - Free

Single/Non-employee \$5

Bronze \$25

Silver \$50

Gold \$100

Platinum \$500

Fundraisers

Some examples of fundraisers that have been held are:

Scrub Sales

Jewelry Sales

Book Fairs

RADA Knives

T-shirt Sales

Special Hosted Events

Purpose

To promote and support the individuals of Boswell Regional Center

To foster the development of programs on their behalf

To recognize and reward the efforts of employees of Boswell Regional Center

To raise and receive funds for the accomplishment of the above purposes.

Boswell Regional Center's



Boswell Regional Center

Boswell Regional Center
Post Office Box 128
Magee, MS 39111

Telephone: 601-867-5000

www.brc.state.ms.us

A MS Department of Mental Health Facility



Boswell Regional Center's Friends & Family Association is a non profit all volunteer organization that works to ensure Boswell individuals are valued and loved.

All monies received from memberships are donated to the organization to purchase items for the individuals served by Boswell Regional Center.

Donations

Donations may be made in memory or honor of a loved one:

In Memory of _____

In Honor of _____

By: _____

Acknowledgement should be sent to the following:

Name: _____

Address: _____

State: ___ Zip Code: _____

Phone: (___) _____

Email: _____

Boswell Regional Center

**Friends & Family Association
P.O. Box 128
Magee, MS 39111**

**Boswell
Regional
Center
Friends and
Family
Association**



*Where Dreams Can
Become Reality!*